

Lonic.

65 Newman Street, W1

Fitzrovia, the new home of your business.



960 - 3,029sq ft

£35/sqft

65 Newman St, London, W1T 3EG










65 Newman Street, located in the desirable Fitzrovia, currently has three spaces available.

All three floors provide bright, open plan office space with demised kitchenettes and WCs. Floors can be acquired either together or separately.

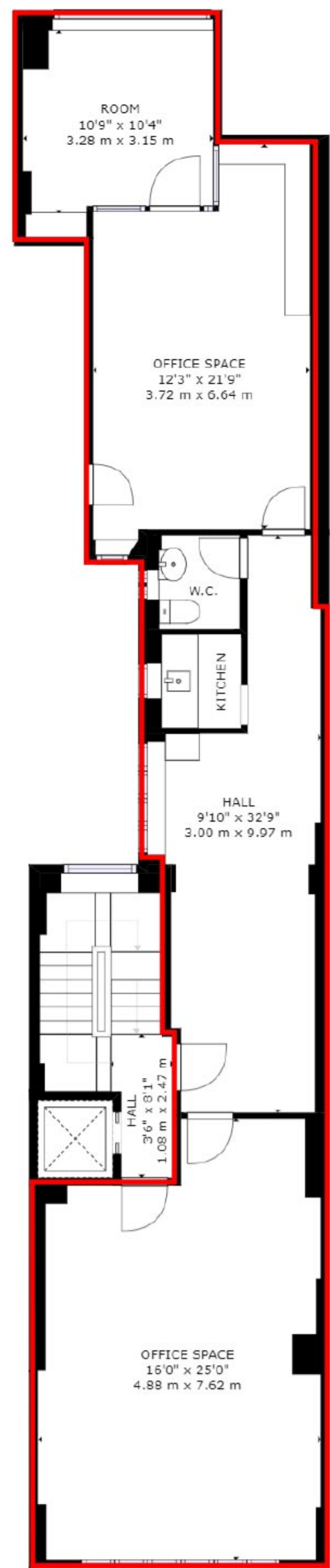
Being local to both Goodge Street and Tottenham Court Road Stations, your new office is easily commutable for you and your staff.

Amenities

All included in your rent:

- | | | |
|--|--|---|
|  24 Hour Access |  Courtyard |  WC & Showers |
|  Wooden Floors |  Video Entry System |  LED Lighting |
|  Wall Mounted Radiators |  Kitchenette |  Comfort Cooling |

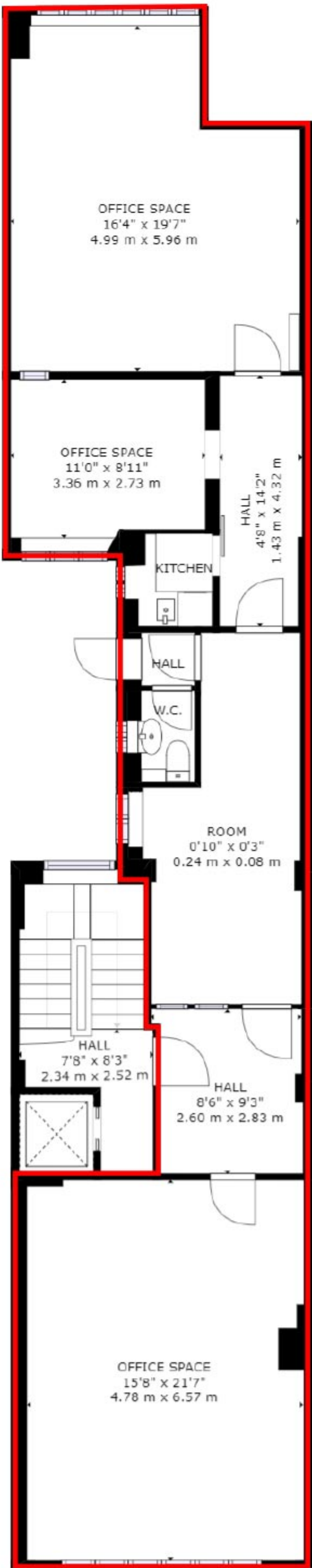




1st Floor
960sqft



2nd Floor
1,016sqft



3rd Floor
1,053sqft

Space Currently Available:

Floor	First Floor	Second Floor	Third Floor
Size (sqft)	960sqft	1,016sqft	1,053sqft
Price (per sq.ft)	£35.00	£35.00	£35.00
Service Charge (per sq.ft)	£8.00	£8.00	£8.00
Business Rates (per sq.ft)	£20.00	£20.00	£20.00
Total PCM	£5,024.00	£5,286.00	£5,528.00

65 Newman St, London, W1T 3EG

65 Newman Street is located mid-way between Mortimer Street and Eastcastle Street, opposite Newman Passage.

This building is in the heart of Fitzrovia where there is an extensive choice of local amenities including famous restaurants and bars. Tottenham Court Road, Goodge Street, Warren Street and Oxford Circus underground stations are all close by.

Local Amenities

Food and Drink

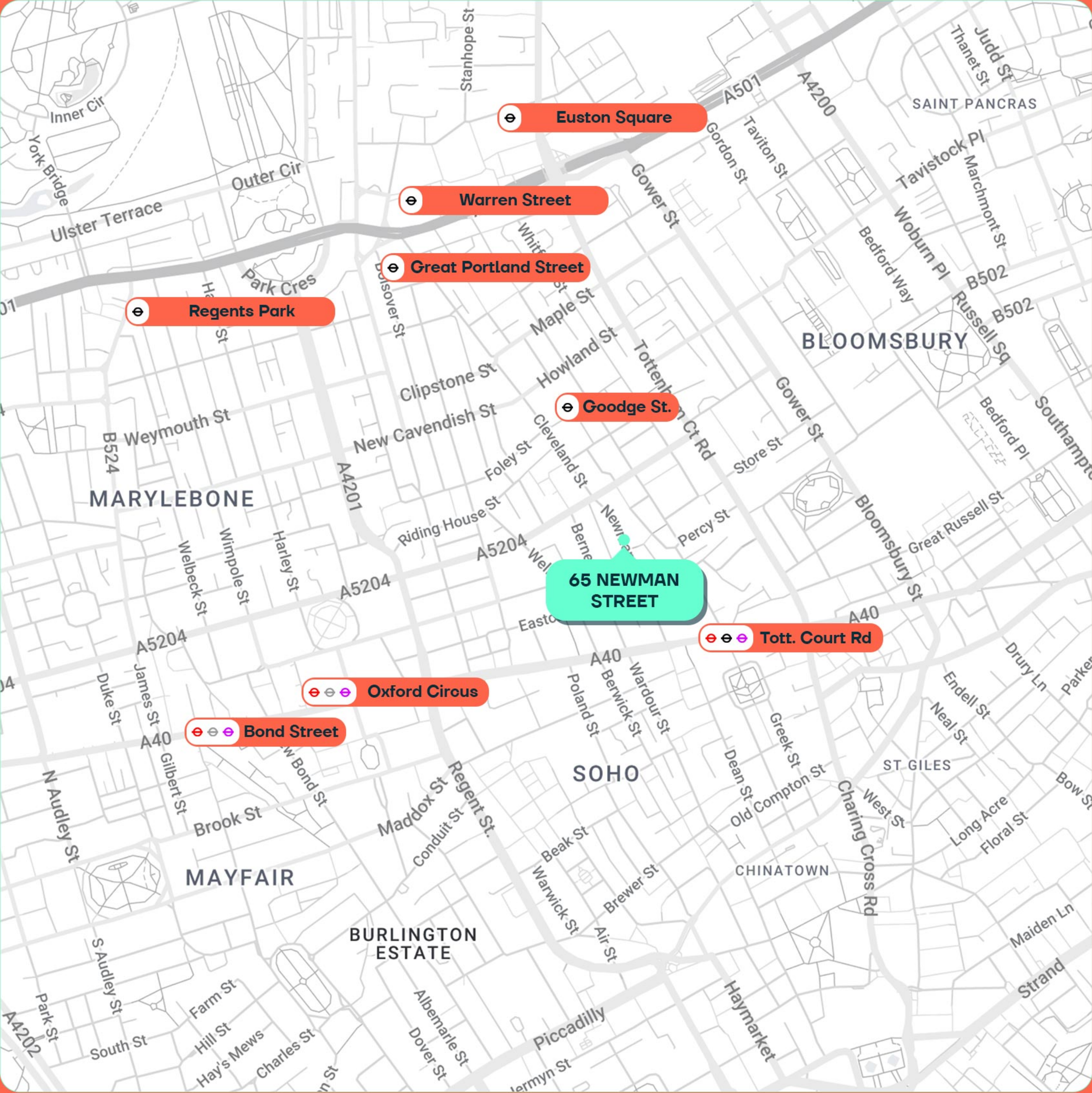
- 01 Circolo Popolare
- 02 Bricco e Bacco
- 03 Lima Peruvian Restaurant Fitzrovia
- 04 Berners Tavern
- 05 Wok to Walk
- 06 Flesh and Buns
- 07 Hagen Espresso Bar
- 08 Greyhound Café
- 09 The Bagel Point
- 10 Akoko
- 11 Copita Fitzrovia Tapas Bar
- 12 Hoxton Beach
- 13 BlackBörk Coffee & Caps
- 14 Six by Nico London

Travel

- 01 Goodge Street
- 02 Tottenham Court Road
- 03 Oxford Circus
- 04 Bond Street
- 05 Regents Park
- 06 Great Portland Street
- 07 Warren Street

Hotels and Leisure

- 01 Monopoly Lifesized
- 02 The Cartoon Museum
- 03 ODEON Tottenham Court Road
- 04 BFI Stephen Street
- 05 Volonte
- 06 Outernet
- 07 Dominion Theatre
- 08 The Oxford Circus Residences
- 09 Charlotte Street Hotel
- 10 The Mandrake
- 11 Sonder The Bard
- 12 Sanderson London
- 13 Kula Fitzrovia
- 14 The London EDITION



Lonic.

Welcome to Fitzrovia.

Contact us to arrange a viewing via:

020 7486 0900

Ross Freedman

rmf@lonic.uk

07900 225 051

Greg Berg

gb@lonic.uk

07540 635 664

Office:

49 Welbeck Street,
London, W1G 9XN

Website:

www.lonic.uk

lonic.uk

