

Lonic.

FIFTY GEORGE

48 George Street, W1

Part of The George Blandford Estate



1,855sq ft

48 George St, London, W1U 7DY

48 George Street, located within the heart of Marylebone, comprises 1,855sq.ft of exceptionally fitted office space.

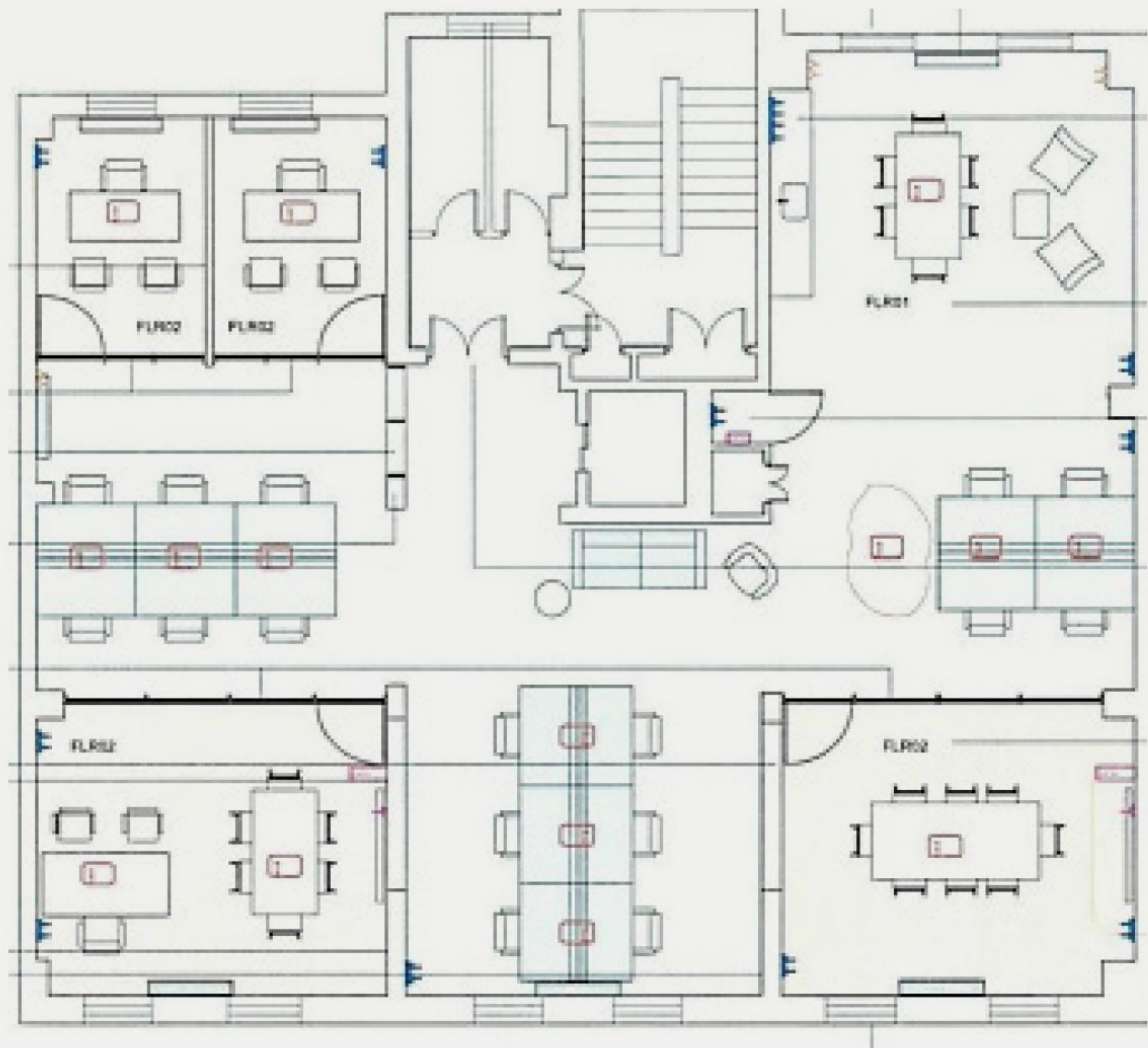
Accessible via its unique Courtyard Entrance, the open plan space provides enough room for over 18 desks. The office also includes; luxury WC's, a modern kitchenette, spacious break out area, 2 large private meeting rooms, and 2 private offices.

| Lease | Rent | Rates | Service Charge | Total |
|--|---------------------------|-------------------------------|----------------------------|--|
| New Lease/s available for a term by arrangement. | £105/sq ft £195,000 pa | C. £30/sq ft C. £55,650 pa | C. £20.00 C. £37,000 pa | C. £155/sq ft £287,700 pa £23,975 pm |



Second Floor

1,855sq ft



48 George Street, W1

Amenities

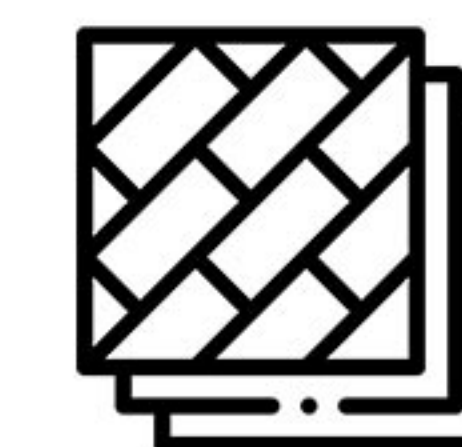
What the building includes:



2x Private Offices



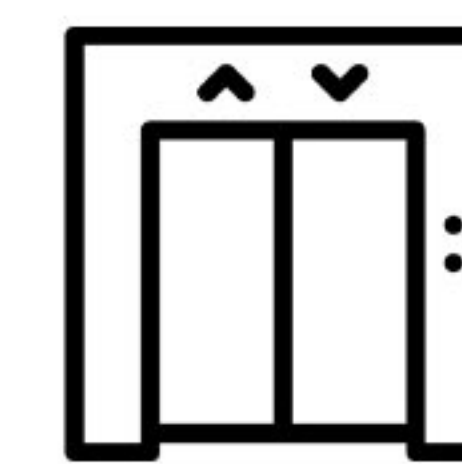
End of Trip Facilities



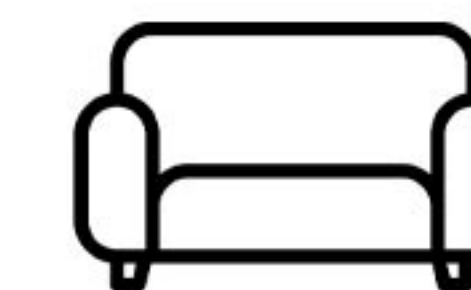
Raised Floors



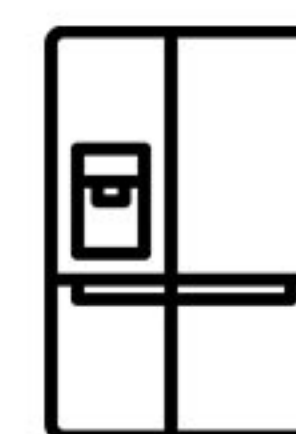
2x Private Meeting Rooms



Passenger Lift



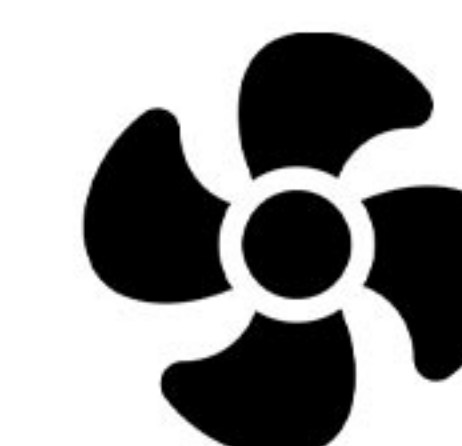
Large Breakout Area



Private kitchenette



Natural Light Throughout



Air Conditioning

Local Amenities

● Food and Drink

- 01 Lina Stores
- 02 Cavita
- 03 Hagen
- 04 Carlotta
- 05 Delamina
- 06 Ottolenghi
- 07 Fischers
- 08 Chotto Matte
- 09 The Coach Makers Arms
- 10 The Chiltern Firehouse
- 11 KOL
- 12 Granger & Co
- 13 St. JOHN
- 14 108 Brasserie

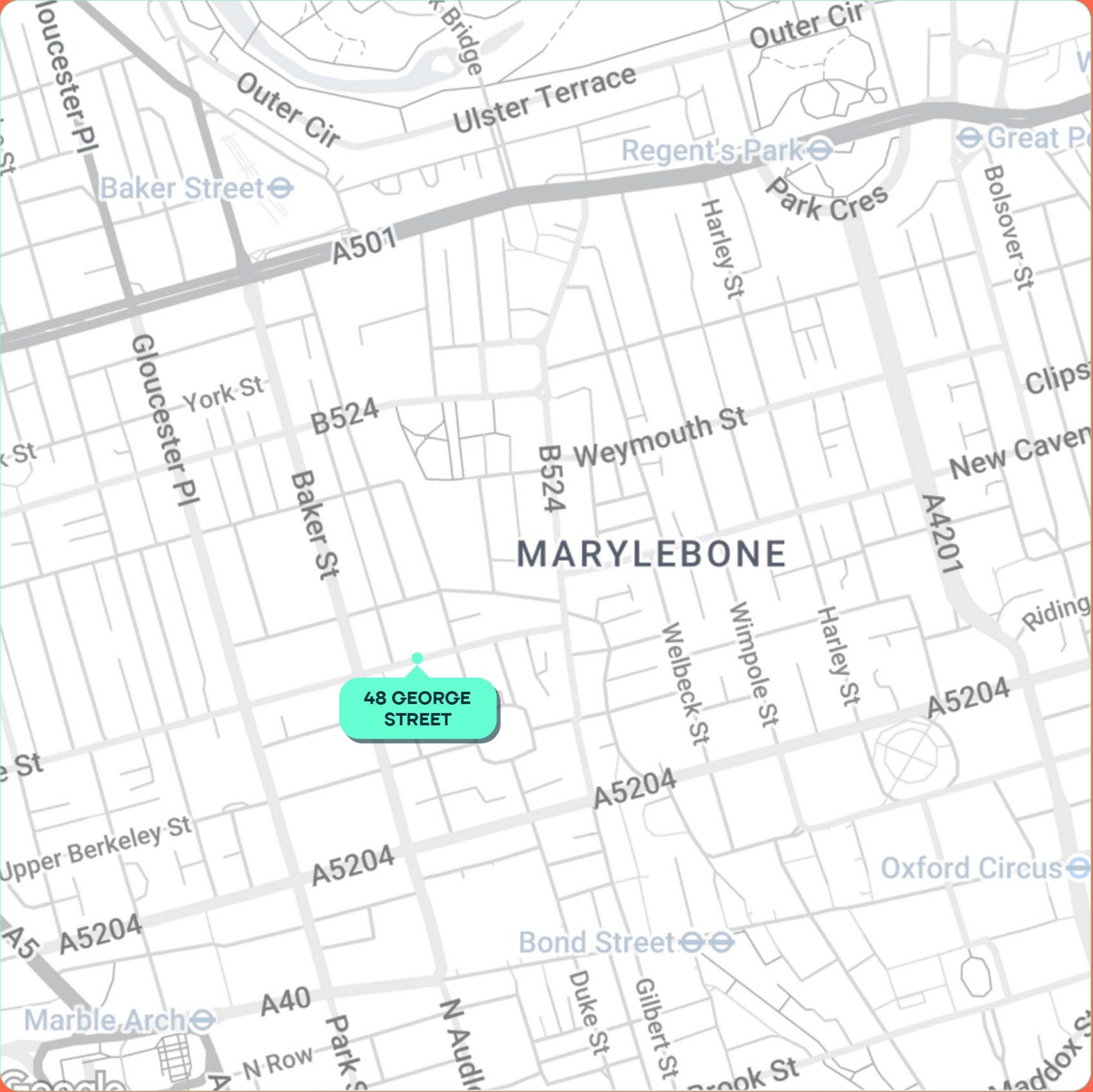
● Travel

- 01 Bond Street
- 02 Oxford Circus
- 03 Marble Arch
- 04 Baker Street
- 05 Regents Park
- 06 Great Portland Street
- 07 Marylebone

○ Hotels and Leisure

- 01 The Marylebone Hotel
- 02 Durrants
- 03 The Langham Hotel
- 04 The Landmark Hotel
- 05 Nobu Hotel
- 06 Home House
- 07 Zetter Townhouse
- 08 Henry's Townhouse
- 09 The Wallace Collection
- 10 Wigmore Hall
- 11 Barrecore
- 12 Thirdspace
- 13 1 Rebel
- 14 Kobox
- 15 BXR
- 16 The Cinema at Selfridges


All within
a 1-15 minute
walk.



Lonic.

Welcome to Marylebone.

Contact us to arrange a viewing via:

020 7486 0900

Ross Freedman

rmf@lonic.uk

07900 225 051

Greg Berg

gb@lonic.uk

07540 635 664

Office:

49 Welbeck Street,
London, W1G 9XN

Website:

www.lonic.uk

lonic.uk

Lonic.

